



DOUGLAS COUNTY  
MEMORIAL HOSPITAL

---

# COMMUNITY HEALTH NEEDS ASSESSMENT 2025

# OVERVIEW

Between September and November 2025, Douglas County Memorial Hospital (DCMH) conducted a Community Health Needs Assessment (CHNA) for the approximately 2,800 residents of Douglas County, South Dakota. DCMH is located in Armour, South Dakota and serves the surrounding rural area within Douglas County.

A CHNA is a tool used to help communities assess their strengths as well as their weaknesses when it comes to the health of the community. It is also the foundation for improving and promoting the health of the community. The process helps to identify factors that affect a population's health and determine the availability of resources within the community to adequately address these factors and any additional health needs.

# OVERVIEW

The CHNA process fulfills the requirements set forth by Internal Revenue Code 501(r)(3), a statute established within the Patient Protection and Affordable Care Act, which requires not-for-profit hospitals to conduct a CHNA every three years. This report includes qualitative and quantitative information from local, state, and federal sources. In addition, input was received from persons that represented a broad range of interests in the community, persons with public health knowledge and expertise, and persons representing medically underserved and vulnerable populations. Input received from the public on the prior CHNA would have been considered in the process, but no feedback was received.

DCMH will create an implementation plan to clarify how it and other community resources will address the needs identified during the CHNA process.

# HOSPITAL OVERVIEW

Douglas County Memorial Hospital is an 11-bed healthcare facility that has been serving the medical and health care needs of people living in Douglas County and the surrounding communities in south-central South Dakota since 1957.

DCMH has a staff of around 100 health care professionals that proudly delivers quality medicine and compassionate care with a focus on patient comfort and satisfaction.

DCMH is the only hospital in Douglas County and provides 24-hour emergency room coverage. The primary communities served by DCMH include Armour, Corsica, and Stickney.

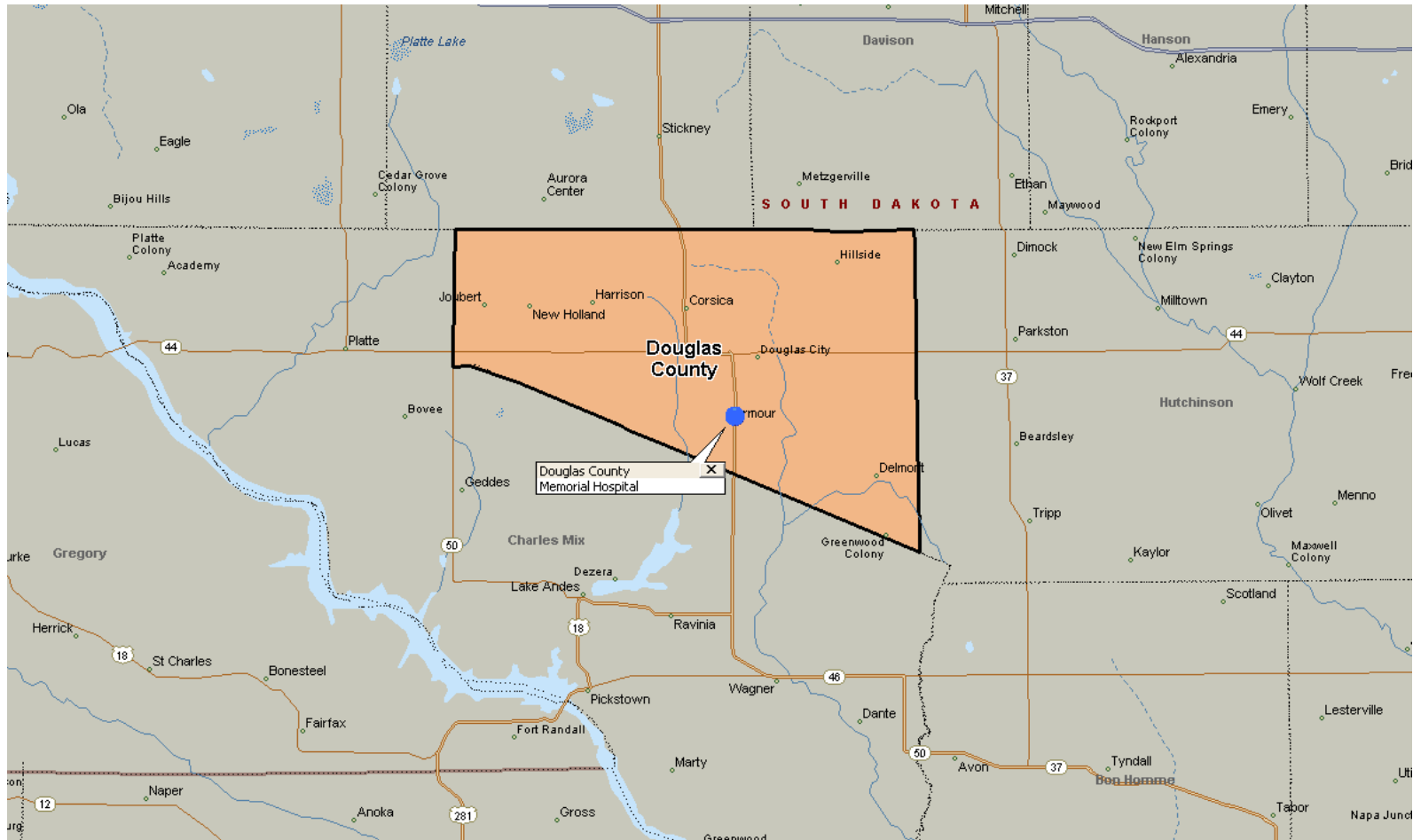
# SERVICES OVERVIEW

## DCMH PROVIDES THE FOLLOWING SERVICES:

- Acute Care
- Specialty Clinics
- Emergency Room
- Ultrasound
- CT Scan
- Telemedicine
- Pharmacy
- Assisted Living
- Homemaker
- Surgical Services
- Diagnostic Services
- Cardiac Rehabilitation
- Laboratory
- Outpatient Services
- Therapy
- Respiratory Care
- Visiting Nurse

# COMMUNITY SERVED

The community served was defined as Douglas County as 69% of the hospital's patients come from Douglas County. The hospital also provides services to patients from neighboring counties, but chose to focus on Douglas County.



# COMMUNITY SERVED

The primary industries in Douglas County include agriculture, retail trade, and health and social services.

As of the 2020 census estimate, there were 2,835 people with an average population density of 7 resident per square mile.

The largest ethnic groups in Douglas County, SD are White 92.8%, Black or African American 1.49%, Hispanic 1.35%, American Indian & Alaska Native 1.17% and 3.19% Other.

Source: <https://datausa.io/profile/geo/douglas-county-sd>

# COMMUNITY SERVED

Median household income in the service area is \$78,125. The per capita income from the county was \$37,172 which is lower than both South Dakota and United States figures.

Approximately 13.7% of the population has an income below the poverty line.

Correlations exist between health outcomes and socioeconomic status. High income individuals tend to be in better health than low income individuals.

# COMMUNITY SERVED

The unemployment rate in Douglas County was 2.1% in August 2025 with national unemployment rates at 4.2% according to the SD Dept of Labor & Regulation.

Employment status can impact mental health and health care utilization. Unemployed persons have more depression and anxiety symptoms than those who are employed.

86% of individuals had health insurance coverage with the remaining 14% having no coverage.

Source:

<https://dlr.sd.gov/lmic/lbtables/county/f.aspx#:~:text=The%20Labor%20Market%20Information%20Center%20collects%20%20annual%20es,an%20earl%20gs%20by%20industry%2C%20and%20occupational%20wages> and <https://www.countyhealthrankings.org/health-data/south-dakota/douglas?year=2024>

# HEALTH DATA

To examine health areas of strength and health areas to explore, *County Health Rankings* is utilized. The County Health Rankings & Roadmaps program is a collaboration between the Robert Wood Johnson Foundation and the University of Wisconsin Population Health Institute. Counties are ranked against their state peers based on health outcomes and health factors. Subcategories are as follows:

## Health Outcomes

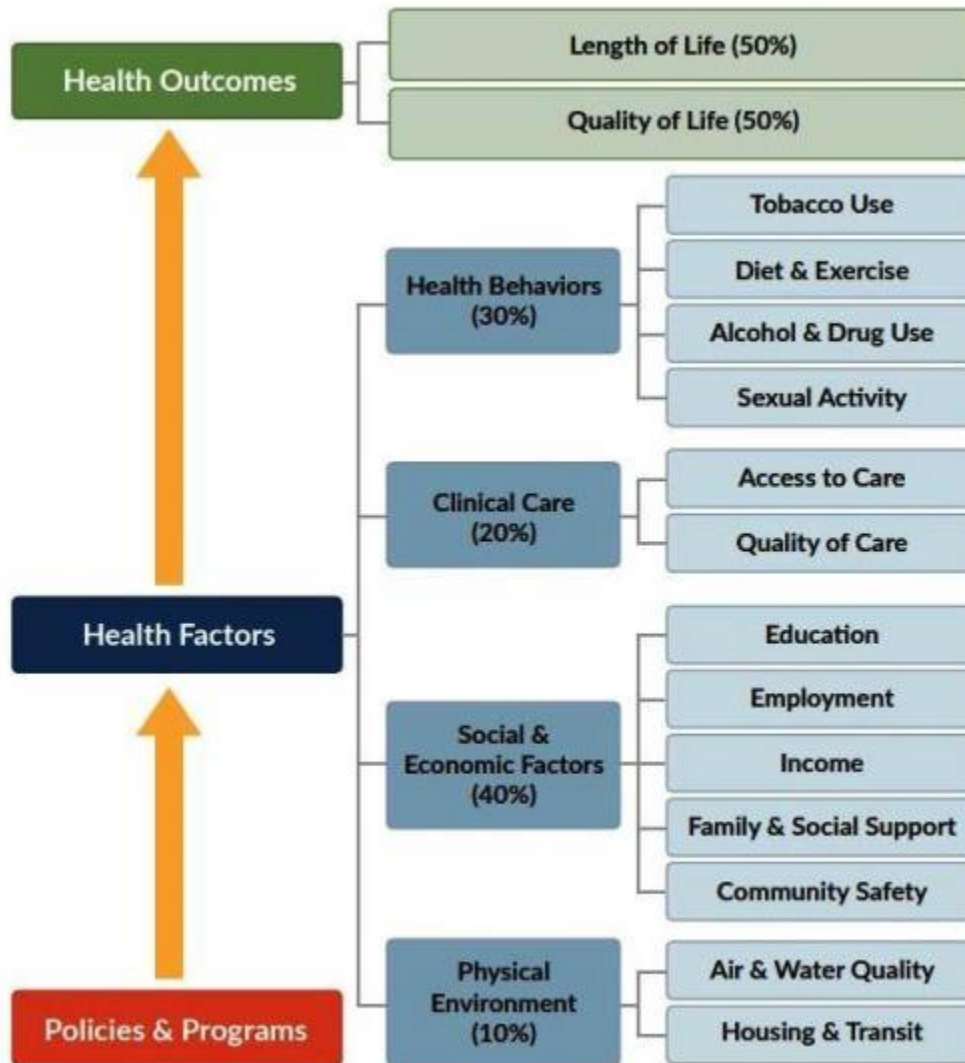
- Length of life
- Quality of life

## Health Factors

- Health behaviors
- Clinical care
- Social and economic factors
- Physical environment

The report provides information by county on “Areas of Strength” and “Areas to Explore”, as determined by the County Health Rankings.

# HEALTH DATA



County Health Rankings model © 2018 UWPHI



**County Health Rankings & Roadmaps**  
A Healthier Nation, County by County

# HEALTH DATA RESULTS

The Douglas County was ranked 18 out of 61 counties for Overall Health Outcomes in South Dakota in the most recent literature (2023).

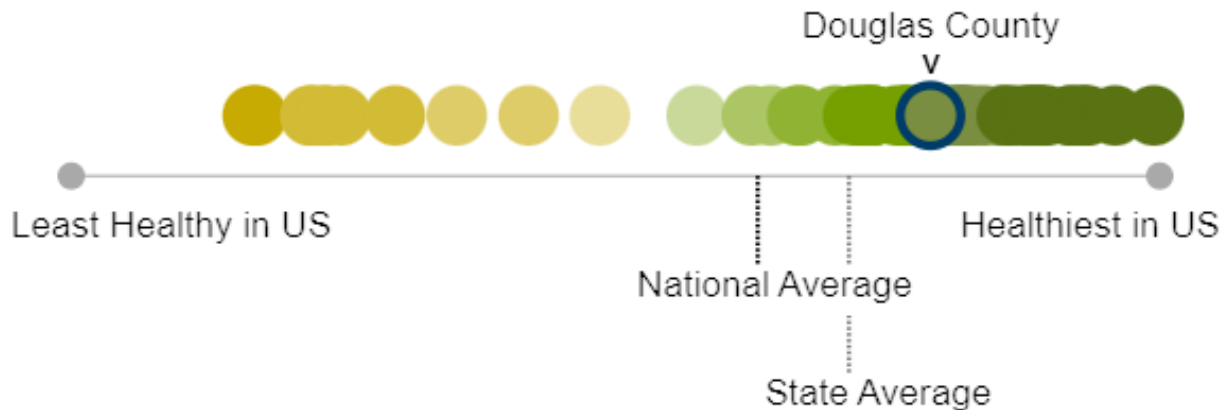
Health Outcomes is broken down by Length of Life and Quality of Life:

The Douglas County is ranked 22 out of 61 counties in Length of Life with life expectancy estimated at 78.9 years of age.

# HEALTH DATA RESULTS



## Douglas County Health Outcomes - 2024



Douglas County is faring slightly better than the average county in South Dakota for Health Outcomes, and better than the average county in the nation.

Source: County Health Rankings, University of Wisconsin Population Health Institute  
<https://www.countyhealthrankings.org/health-data/south-dakota/douglas?year=2024>

# HEALTH DATA RESULTS

Areas of strength in the County Health Rankings include the categories below:

- Food Insecurity
- High School Completion
- Unemployment
- Children in Single-Parent Households
- Air pollution – particulate matter
- Social Associations

# HEALTH DATA RESULTS

Areas to explore in the County Health Rankings include the categories below:

- Adult Obesity
- Adult Smoking
- Access to Exercise Opportunities
- Uninsured

# HEALTH DATA RESULTS

Clinical Care has a few items of note.

The uninsured and flu vaccinations rates were both poorer than the Top US Performers and South Dakota figures. There is a portion of the population that voluntarily declines the use of both health insurance and vaccinations due to religious reasons.

As noted in past assessments dental is an area of need as there is 1 dental practice within the county.

Finally, preventable hospital stays (Medicare enrollees) is higher this assessment than in years past than the Top US Performers and South Dakota figures. The hospital reviews all admissions through their utilization review committee.

*Source: County Health Rankings, University of Wisconsin Population Health Institute*

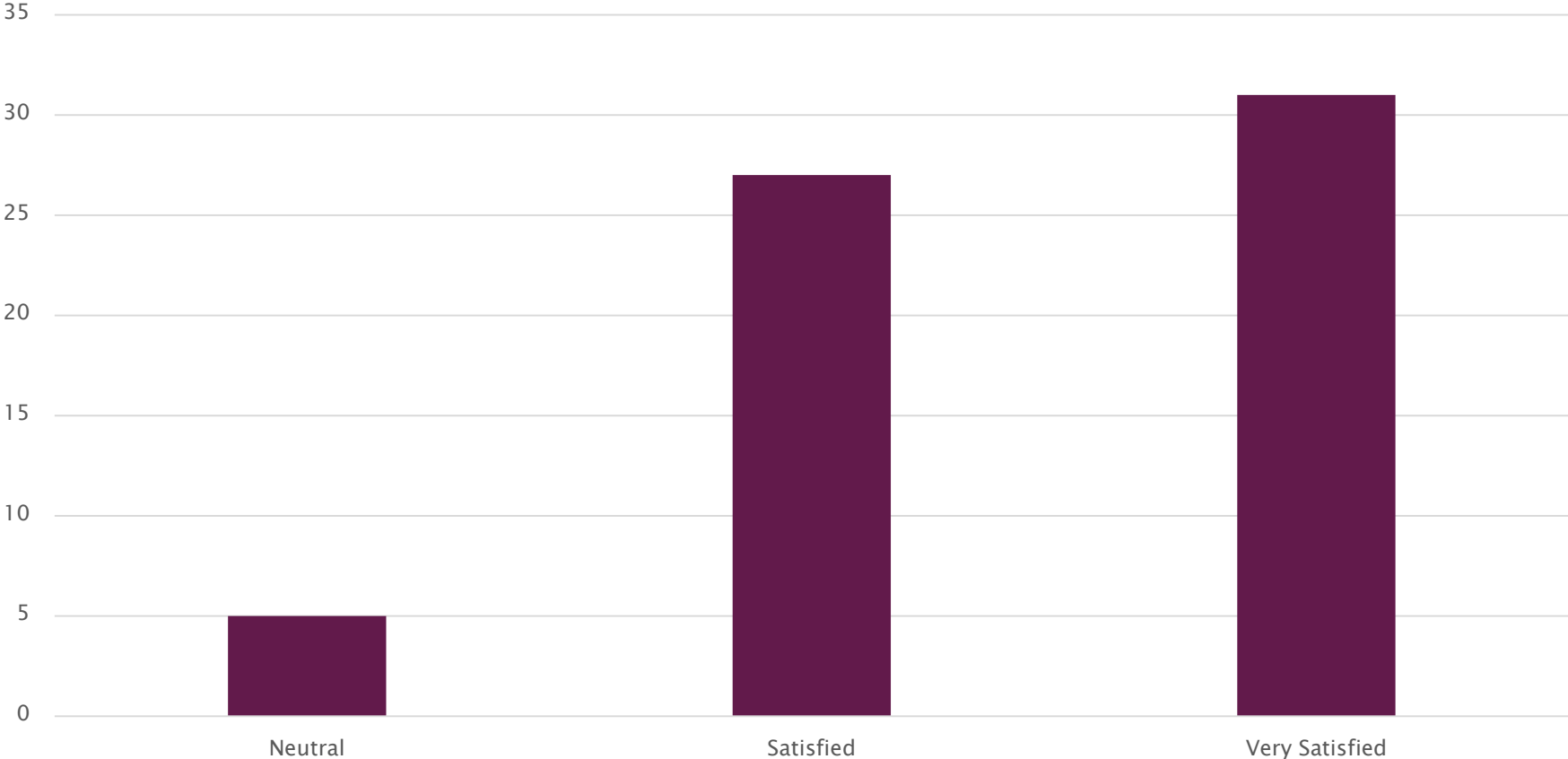
# SURVEY RESULTS

To ensure input from persons with a broad knowledge of the community, a survey was administered between September 29 through October 31. This tool was developed to address general questions related to the health of the community. The survey was returned for independent review and analysis.

- The survey was distributed to the public by the hospital via the hospital's Facebook page along with providing an opportunity to patients when waiting for their appointments to complete the survey on a hospital-supplied tablet. It was also sent to all employees of the hospital.
- 63 surveys were completed by members of the community.
  - Roughly a 20% decrease in responses from 2022.

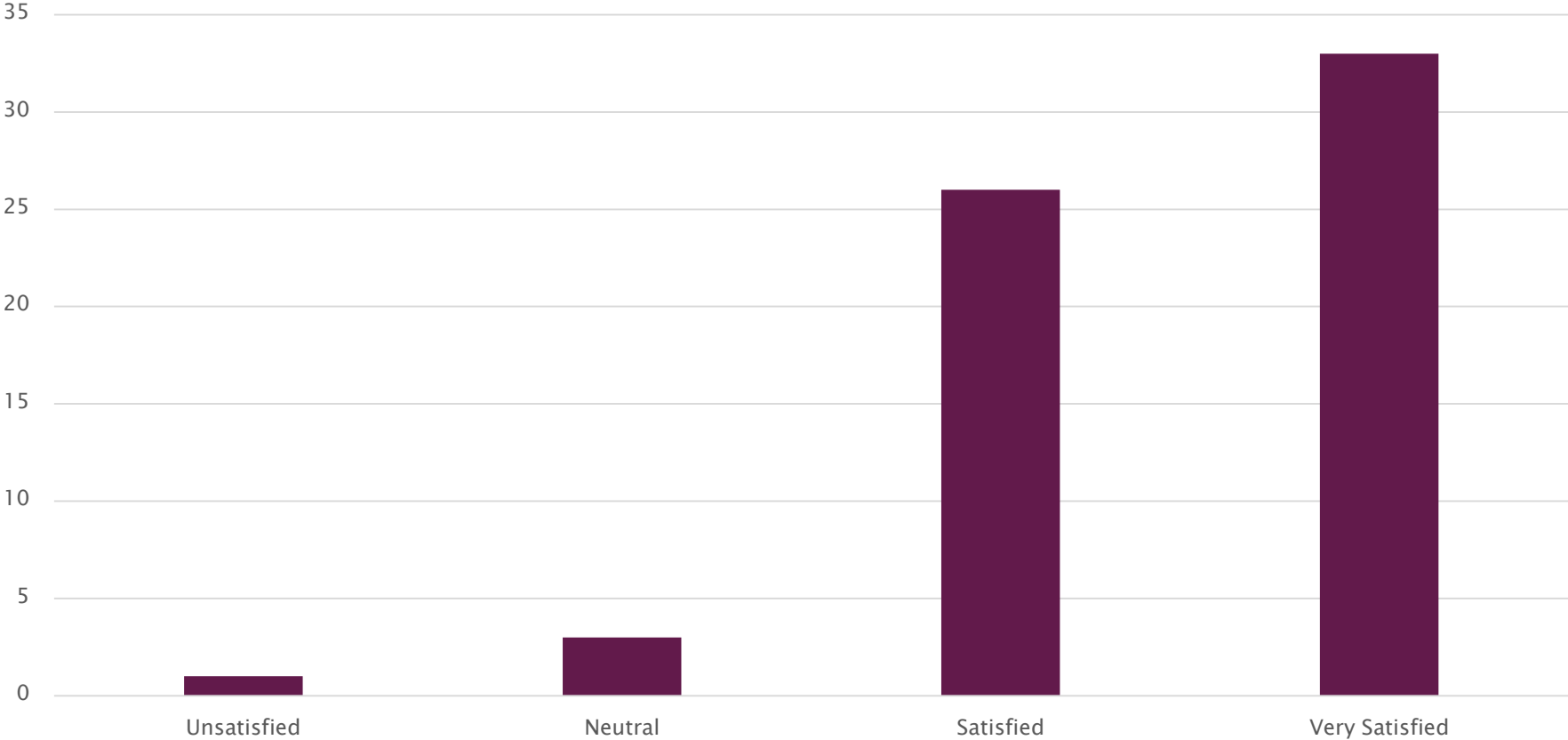
# SURVEY RESULTS

How satisfied are you with the availability of healthcare services in Douglas County?



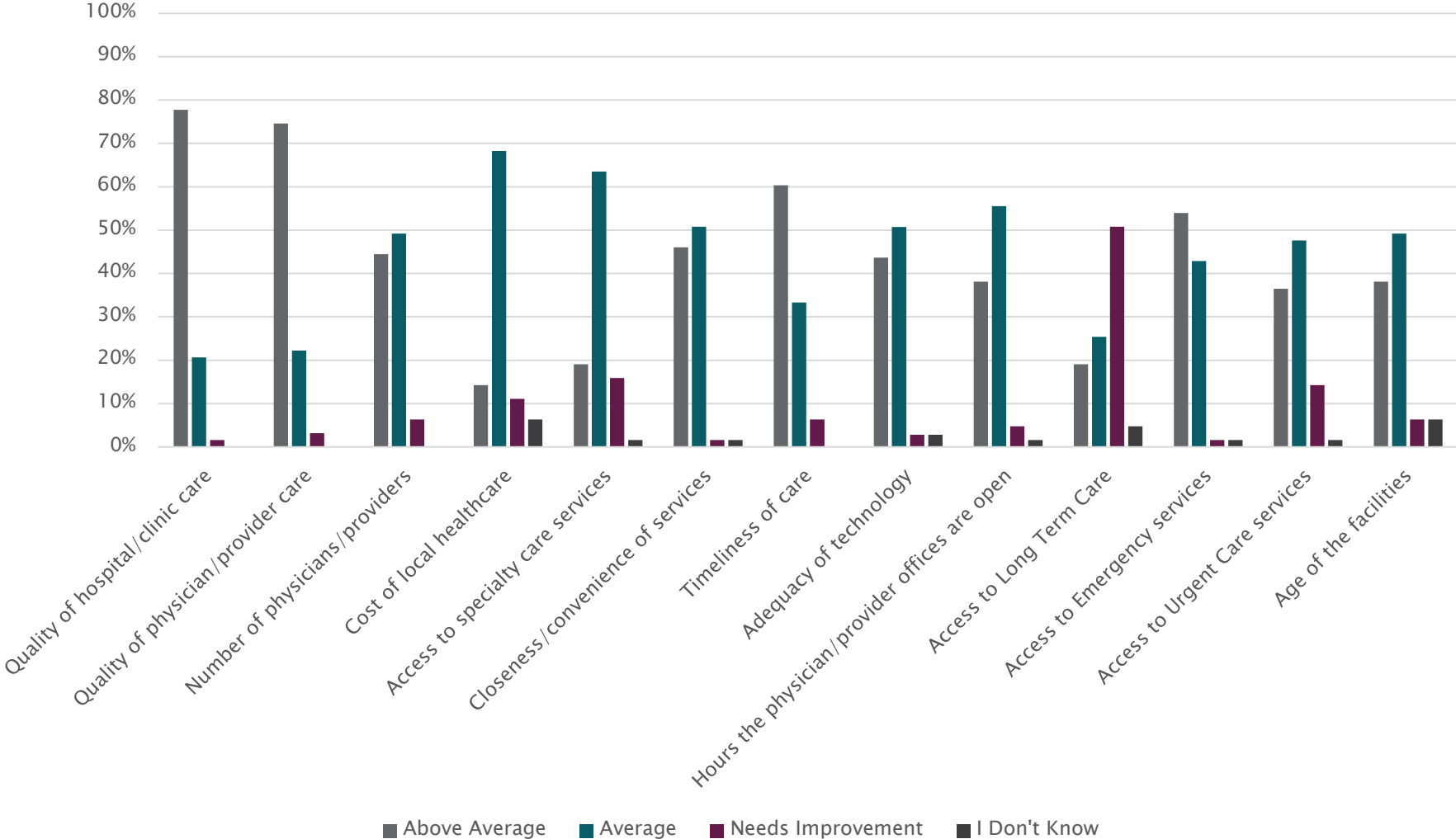
# SURVEY RESULTS

How satisfied are you with the quality of healthcare services in Douglas County?



# SURVEY RESULTS

How do you view the following healthcare topics in Douglas County?



# SURVEY RESULTS

Primary changes in healthcare requested in the survey were:

- Transportation issues for individuals with mobility issues.
- Increased access to specialties
  - Obstetrics (most requested, repeat from 2022)
  - Mental/Behavioral Health
  - Urgent Care
  - Orthopedics
  - Ear, Nose, & Throat
- Improved access to Long Term Care services (repeat from 2022)

# COMMUNITY ADVISORY COMMITTEE

A Community Advisory Committee meeting was conducted on November 25, 2025 with individuals that live and work in the community. Invitations were sent to individuals representing various community, business, and educational organizations. Representatives from local health care providers and the community health departments were included to bring in additional professional perspective.

The individuals identified to participate in the process have direct access to individuals across all subsections of the community and therefore can address needs that may impact those populations that are medically underserved or most in need.

# COMMUNITY ADVISORY COMMITTEE

Participants invited to participate on the Community Advisory Committee:

- Community Health Nurse
- Mayor – City of Armour
- Douglas County Commissioner
- Hospital Disaster Preparedness Coordinator
- High School Principal – Armour School District
- Director of Nursing – Douglas County Memorial Hospital
- Physician Assistant – Douglas County Memorial Hospital
- CEO – Douglas County Memorial Hospital
- CFO – Douglas County Memorial Hospital

# CONDUCTING THE ASSESSMENT

The Community Advisory Committee reviewed the scope of the CHNA and underwent brainstorming/discussion exercises to illuminate:

- Individual members' definition of health
- Unmet health needs in the community
- Underserved population
- Key community health issues

There were no primary or chronic diseases or other specific health needs identified related to low income or chronically ill populations.

# CONDUCTING THE ASSESSMENT

The Community Advisory Committee members agreed on a set of criteria to use to evaluate the list of potential needs identified through the fact finding process. The criteria included:

- a. Potential to Impact Community Health
- b. Cost to the Community
- c. Community Urgency

The Community Advisory Committee discussed each of the identified health issues in terms of whether it truly was an issue, the potential health improvement impact, cost and urgency. This process involved casual group discussion allowing individuals to make decisions with input from their fellow committee members.

# CONDUCTING THE ASSESSMENT

The Community Advisory Committee members did mention several services that the hospital does provide that is a great benefit to the community.

- The broad range of care that is available locally from clinical care to hospital care to long-term care through assisted living. This includes the services that are brought in mobile, such as mammography, MRI, etc., and through telemedicine options for specialty providers and quick follow up visits.
- EMS is broadly available throughout the county as well with two ambulances available, one in Armour and the other in Corsica.
- Opportunities are also provided to local students for education annually through Healthcare Career Day and shadowing at student's request.

# PRIORITIZING OF NEEDS

After analyzing input from the community and community health data, DCMH prioritized the identified needs based on potential impact on community health, the urgency of the need, and the ability to meet these needs. The following needs, in no particular order, were prioritized for the next three years:

- **Adult Obesity**
  - Increase access to and participation in local nutrition and physical-activity programs
- **Access to Specialties**
  - Increased awareness of current services
  - Ear, Nose, Throat
  - Mental Health
  - Orthopedics
  - Obstetrics

# PRIORITIZING OF NEEDS

After analyzing input from the community and community health data, DCMH prioritized the identified needs based on potential impact on community health, the urgency of the need, and the ability to meet these needs. The following needs, in no particular order, were prioritized for the next three years:

- Adult Smoking
  - Reduce adult tobacco and vape use by increasing access to cessation resources and community education
- Access to Exercise Opportunities
  - Increase access to safe, affordable, and convenient physical activity opportunities for adults
- Uninsured
  - Increase access to health insurance enrollment assistance and improve awareness of affordable coverage options

# COMMUNITY RESOURCES

During the discussion on health needs, the Committee identified other resources in the community that may be available to work in collaboration with Douglas County Memorial Hospital to address the needs identified including:

- Schools
- Churches
- Community Health Nurse
- Prairie Health Clinics in Armour, Corsica, & Stickney
- Assisted Living Facilities
- Nursing Homes
- Armour Community Foundation
- County Commissioners
- Parents and Teachers Together
- EMT/Ambulance
- Lions Club
- Fire Department

# EVALUATION OF IMPACT OF PRIOR CHNA

DCMH completed a CHNA in 2022. DCMH identified the following needs and goals during the prior assessment:

- Mental Health Issues
  - Specific support to youth
- Shortage of Dental Resources
  - Douglas County did add one (1) dental office since last CHNA
- Wellness Issues
  - Overall health and wellness awareness
  - Specific support to youth
- Increased Access to Specialty Services
  - Increased awareness of current services
  - Increased services focused on cancer, mental health
  - Increased access using e-Care services

# EVALUATION OF IMPACT OF PRIOR CHNA

In response to DCMH's 2022 CHNA, the following actions were taken.

- The hospital has replaced the retiring physician and remains open to expanding medical staff coverage if an appropriate candidate becomes available.
- Telemedicine services continue to be offered and promoted as an alternative means of accessing specialty care.
- The hospital has introduced a pain management clinic, held twice per month and provided by a certified registered nurse anesthetist (CRNA).
- The hospital has purchased a van to enhance transportation access for patients.
- Residents of Douglas County now have improved access to oral health services with a dentist established in Armour.
- The hospital remains committed to recruiting additional specialty providers to expand the availability of local outreach clinics.

# NEXT STEPS

---

This Community Health Needs Assessment report was brought to the Douglas County Memorial Hospital Board of Directors at their meeting on November 25, 2025.

DCMH is required to adopt an organization specific implementation strategy in response to the Community Health Needs Assessment report. In the coming months, this implementation strategy will be discussed and approved by the DCMH Board of Directors, and will be reviewed on an annual basis. The CHNA process and public report will be repeated every three years, as required by federal regulations.

# CONTACT INFORMATION

## Community Contact Information for CHNA

Community members who would like to provide comments on the needs identified or provide input on the next CHNA process are encouraged to contact DCMH with their inquiries, suggestions or comments.

Heath Brouwer  
Chief Executive Officer  
Douglas County Memorial Hospital  
708 8<sup>th</sup> Street  
Armour, SD 57313-2102  
[brouwerh@dcmhsd.org](mailto:brouwerh@dcmhsd.org)